



XS-ALU MODULUSZ 50 HINGED DOOR

Installation instructions



CONTENTS

List of required tools	2
Removing the door leaf	3
Coupling frames	4
The use of expanding gasket	5
Positioning the frame to the wall	6
Connecting the door leaf	7
Inserting glazing blocks	7
Glazing the fixed window	8
Glazing the door frame	10
Installing the spindle	12
Door leaf, hinge adjustments	13

LIST OF REQUIRED TOOLS



Electric screwdriver



F-Clamp



Knife



Level



Tape measure



Rubber mallet



Screwdriver



Silicone caulking



Soap water



Suction cup



Piece of wood



Plastic Distancers



Before installation, check the wall opening for the door frame. The wall's opening must be square, level and plumb as on approved shop drawings – to ensure an easy installation process.



Carefully lift the frame from the package and place the door on a soft surface or wooden board. The frame is aluminium – please handle it with extreme care.



To disconnect the door leaf from the door frame, do the following steps: First, remove the three screws from each hinge specified in the picture.



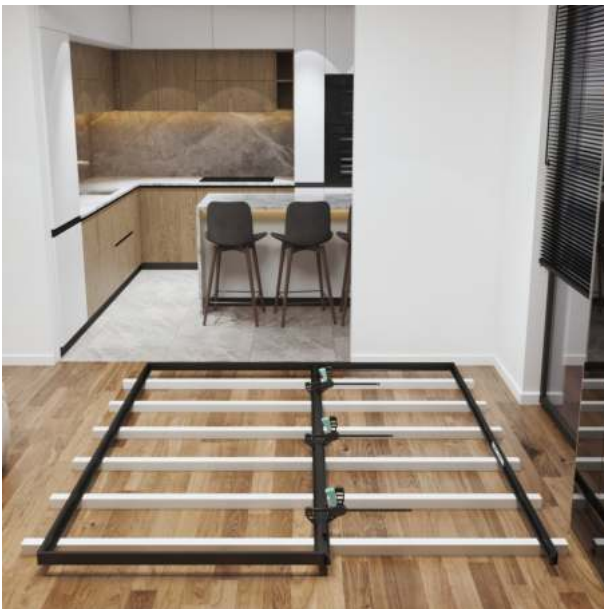
Second step: remove the screws from the hinge axis like shown above.



In the next step, remove the loose upper part by pulling.



As the last step, remove the axis from each hinge by pulling.



If you have two frames that need coupling with clamps, position them tightly. Make sure the coupling flat gaskets are in place in between the frames.



After they are positioned correctly, screw both sides together.



Screw the two frames together at multiple positions.



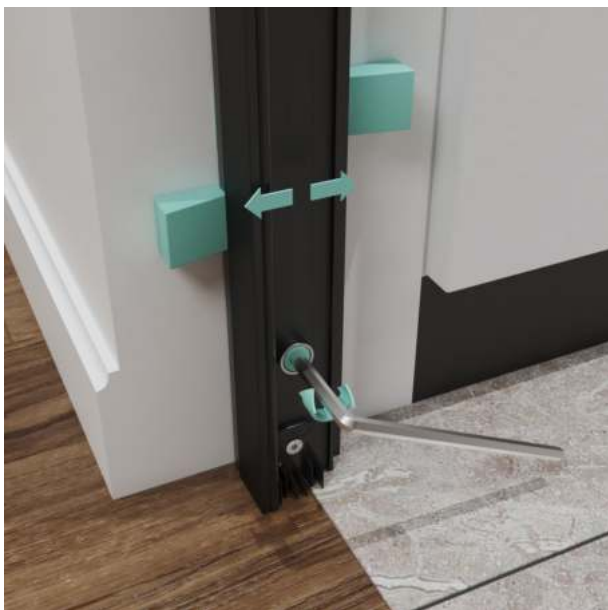
If you use expanding gasket, attach it to the outer sides of the frame.



Attach expanding gasket only on three sides, never on the bottom, unless you have an offset on the fix frame compared to the door.



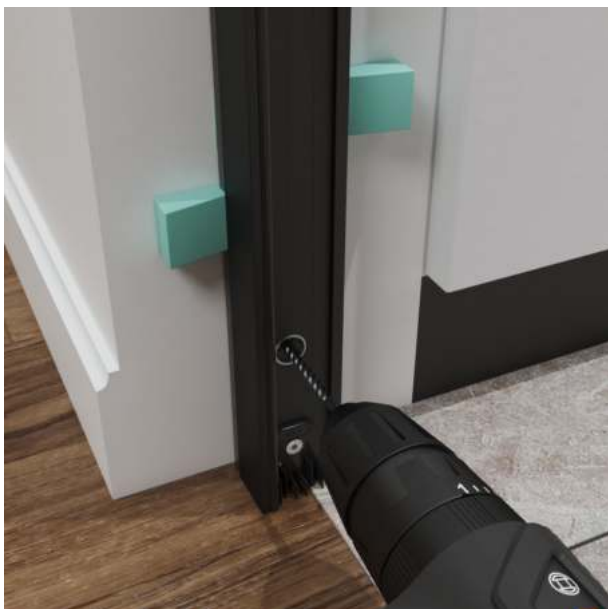
Lift the frame and position it into the wall without screws. Use non-metal wedges to fix it. Make sure that the structure is level and plumb.



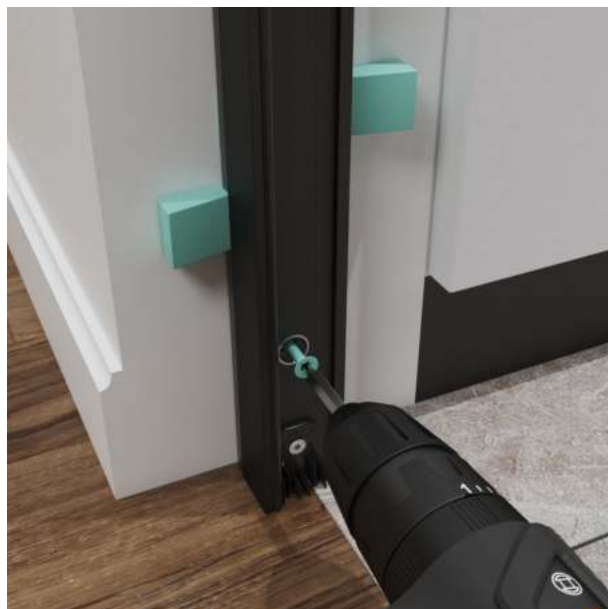
Loosen the wedges on both sides of the frame to adjust the screw shown in the picture. There should be a $10\pm 5\text{mm}$ gap between the opening and the side door frame.



If the gap is more significant than the screw can adjust, put extra underlay. Use a hex key to adjust the aperture. Make sure that the frame is level and plumb.



Using a screw driver, make a hole into the wall through the pre-drilled holes.



Secure the frame by screwing it to the wall.



Cover the holes with the plastic screw caps or colored stickers.



Lift the door leaf to its position and connect the hinges following the steps from Page 3 to 4 backwards. Ensure the door is stable.



Insert the glazing blocks. Fit the rounded side into the frame, then push it down slightly to fit in place.



The placement of glazing blocks is essential.

For the Fix Frame: place four pieces as shown picture.

For the Door: Place six pieces as shown picture. Watch out for the vertical and horizontal placements!



For vertically placed glazing blocks, make sure, that the blocks don't slide down. Use silicone if necessary.



Place a non-metal wedge at the bottom of the door on the lock-side to make sure that the door leaf is horizontal and prepared for glazing.

Glazing the fixed window:



Never put the glass on a hard surface. Clean the glass, place glass suction cups on it and position it into the frame, on top of the glazing blocks. Push the top of the glass into the frame at last.



Place a yellow plastic distance holder (4 mm) between the glass and the coupling frame with silicone caulking to secure it. This is to ensure the frame profile is not bending in the middle.



Push the profile slightly from the side to make sure that the silicone is pressed together.



Install the glazing beads around the glass on both sides. Put it to the frame at a slight angle and then push it down slightly until it clicks. First, snap in the top and bottom, and afterwards, the two verticals.



To ensure easy gasket insertion, secure the glass using non-metal wedge and then replace the wedge with a red plastic distance holder (3 mm).



Repeat the previous step on all corners.



Using soap water, insert the glazing gasket. Always start near the corner, near a plastic distance holder. Make sure to position the gasket with the lips touching the glass.



Cut the glazing gasket to the needed length, then remove the red plastic distance holder while inserting. The gasket may shrink in cold temperature, make sure you cut long enough piece.

Glazing the door frame:



Never put the glass on a hard surface. Clean the glass, place glass suction cups on it and position it into the frame, on top of the glazing blocks. Push the top of the glass into the frame at last.



Place a yellow plastic distance holder (4 mm) between the glass and the door lock, with silicone caulking to secure it. This is to make sure that the frame is not bending in the middle.



At the top of the glass on the lock side, place a wedge to make space between the glazing block and the glass, then insert a blue plastic distancer (2 mm). This step ensures that the door leaf will stand horizontal after removing the wedge from the bottom. (Pg 8, top right picture)



To ensure easy gasket insertion, secure the glass using non-metal wedge and then replace the wedge with a red plastic distance holder (3 mm).



Repeat the previous step on all corners.



Using soap water, insert the glazing gasket. Always start near the corner, near a plastic distance holder. Make sure to position the gasket with the lips touching the glass.



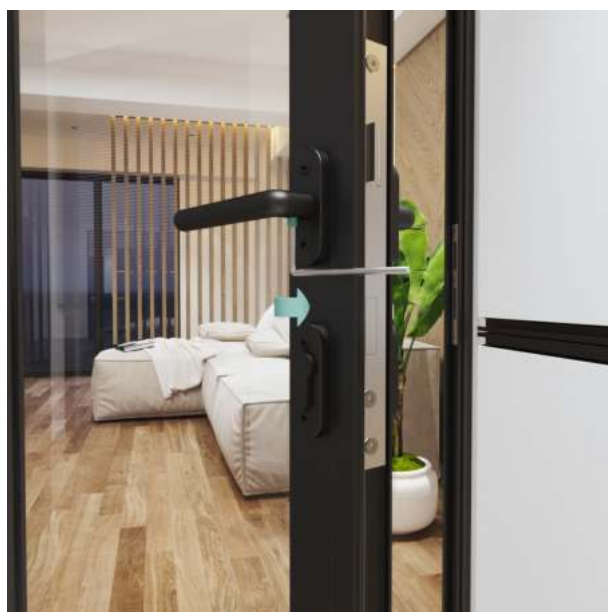
Cut the glazing gasket to the needed length, then remove the red plastic distance holder while inserting. The gasket may shrink in cold temperature, make sure you cut long enough piece.



Install the spindle for the door lock. Make sure the spindle hole is facing downwards.

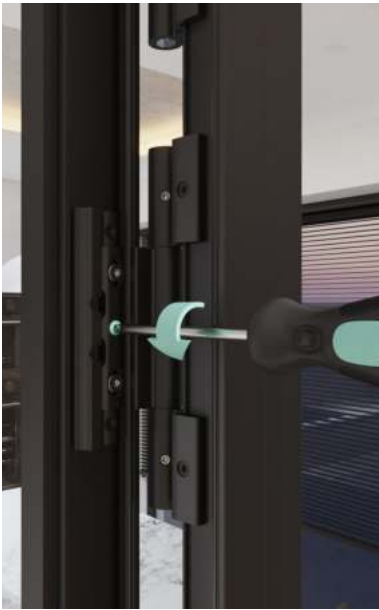


Install the handle and the rose cover on both sides with screws.



Secure the handle with a hex key while pressing the handles against each other.

Door leaf, hinge adjustments:



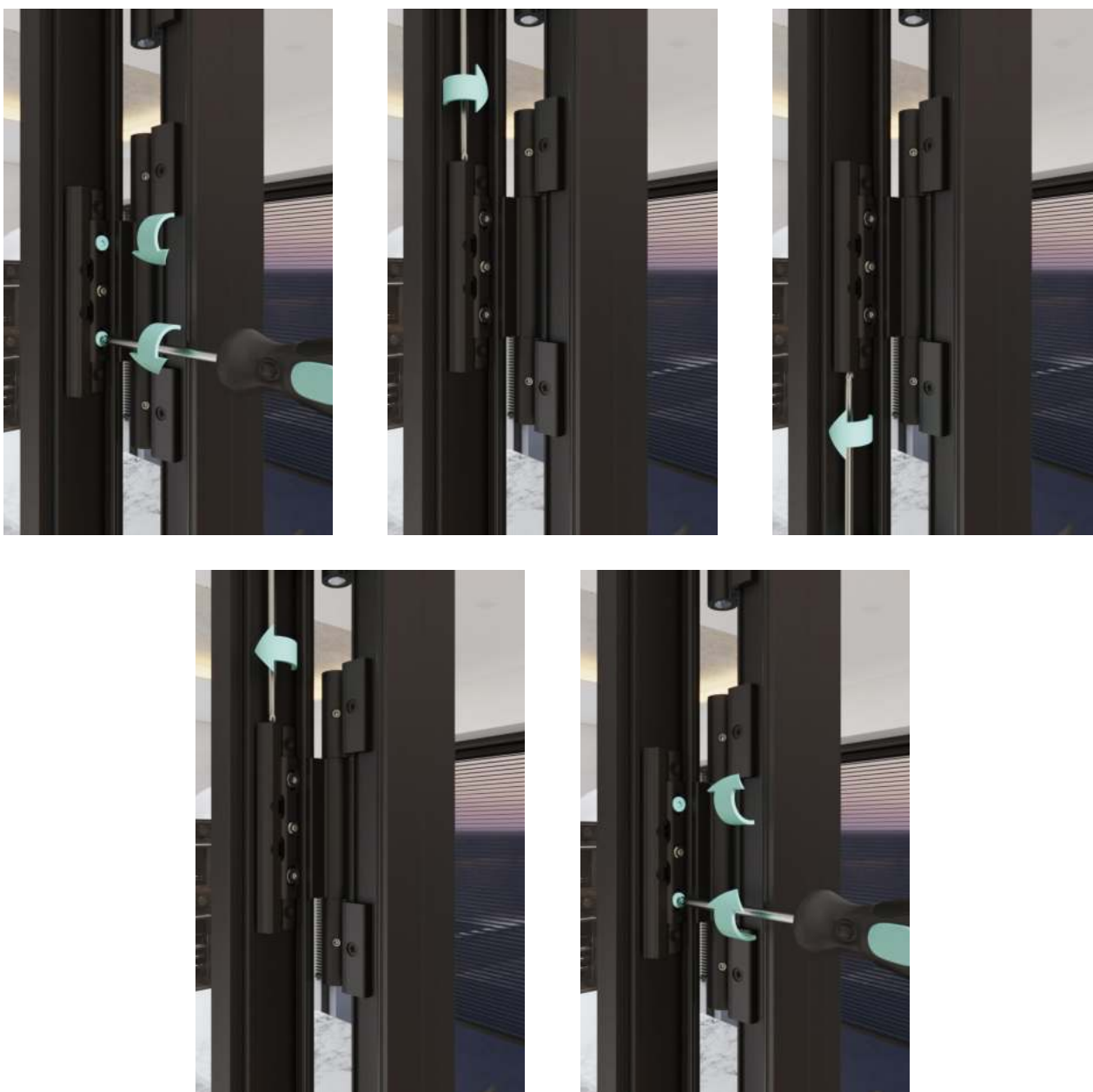
Horizontal adjustment (- 1,5 mm ←) :

A minor adjustment is possible depending on the mounting situation. (- 1,5 mm ←). If you need adjustment towards the hinge side, release the middle screw first, then tighten the top and bottom screws as shown. As the last step, screw back in the central screw.



Horizontal adjustment (+ 1,5 mm →) :

A minor adjustment is possible depending on the mounting situation. (+1,5 mm →). If you need adjustment towards the lock-side, at first release the top and bottom screws, then tighten the middle screw. At last tighten the top and bottom screws.



Height adjustment (- 3 mm ↓):

A minor adjustment is possible depending on the mounting situation. (- 3 mm ↓). To lower the door, first, release the top and bottom screws, and then release the upper vertical screw. Then loosen the vertical screw below – as needed. In the last step, tighten the upper vertical screw and the top and bottom horizontal screws. Start always with the higher situated hinge and repeat the steps with the lower hinges.



Height adjustment (+3 mm ↑):

A minor adjustment is possible depending on the mounting situation. (+ 3 mm ↑). To raise the door, at first, release the top and bottom screws, and then release the upper vertical screw. Next, tighten the vertical screw below – as needed. At last, tighten the upper vertical screw and then the top and bottom horizontal screws.

[illegible]



XS-ALU MODULUSZ 50 HINGED DOOR

Installation instructions